

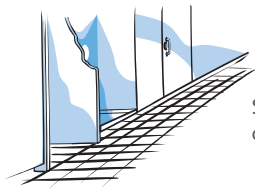


TASKI Sani Acid W3f Mini Guide

Available in 1 litre

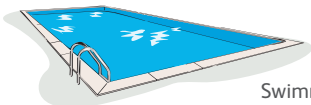


Use for cleaning:



Showers and changing rooms

Washroom surfaces



Swimming pools



Powerful limescale removal

Application...



1a

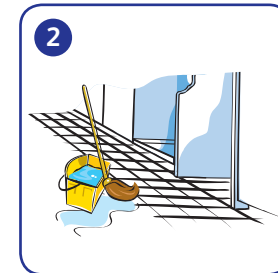
Deep cleaning
Dose 1L product into 5L cold water.
NB: Can be used up to 1:100 depending on soil level.

or



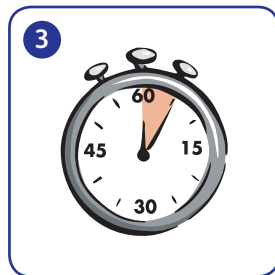
1b

Use undiluted for excessive limescale build-up.



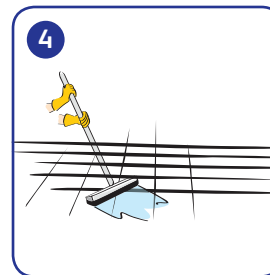
2

Apply with mop/cloth.



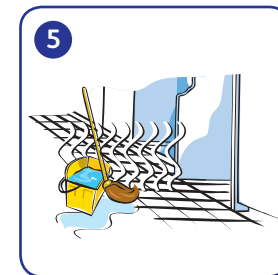
3

Leave for 5 minutes.



4

Agitate with deck brush or suitable pad.



5

Rinse and allow to air dry.

NB: TAKE CARE TO MINIMISE PRODUCT ENTERING SWIMMING POOL WATER

