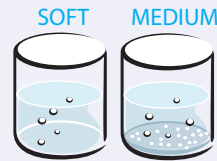
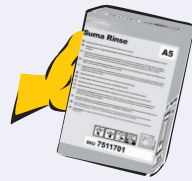




# Suma Rinse A5 SafePack Mini Guide

Available in 10 Litre SafePack

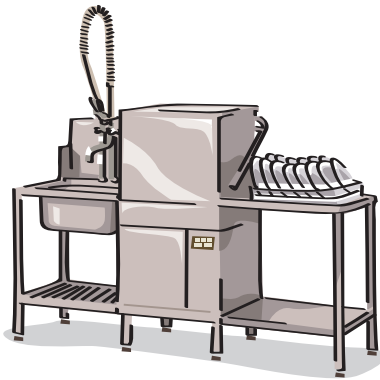


Rinse Aid for soft/medium water



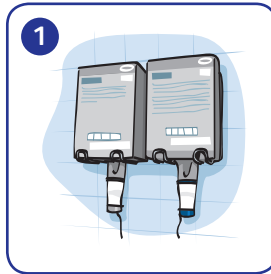
SafePack Innovation

## Use for cleaning:



Auto dosed dishwashing machines

## Using...



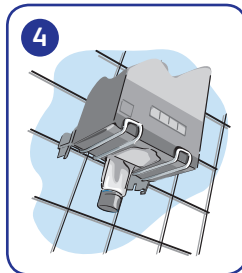
Use with Diversey auto dosed system or built - in dispenser.



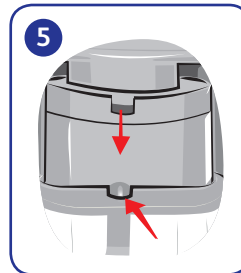
When SafePack is empty, twist the connector ANTI- CLOCKWISE to disconnect.



Remove and dispose of empty pack.



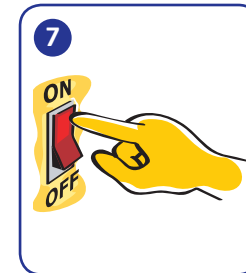
Place open SafePack container onto the rack.



Ensure the pin on the cap aligns with the notch on the connector.



Attach the connector to the SafePack container with a CLOCKWISE push & twist. The alarm will sound if it is not connected fully.



Turn on machine.

