



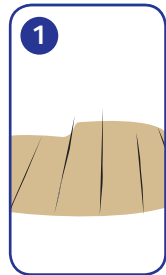
# Carefree Eternum Mini Guide

Available in 5 L



**Use for polishing:**

For occasional use on sealed wooden floors only. Frequent application is not recommended.



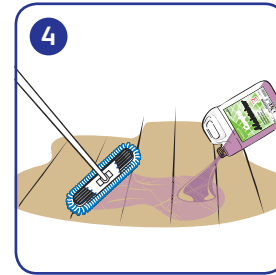
**1** To be used on wooden floors only.



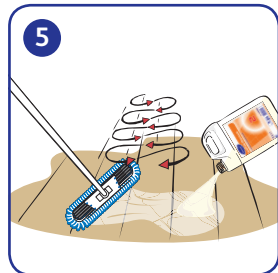
**2** Brush/hoover the floor.



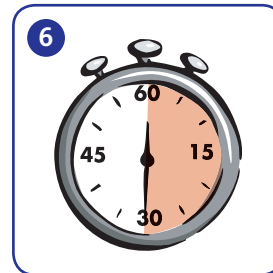
**3** Position wet floor signs around the area.



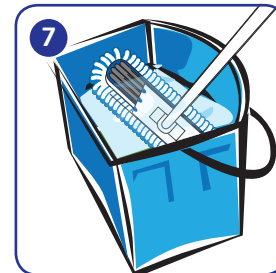
**4** Scrub and mop the floor with the Carefree Floor Maintainer first and allow to dry.



**5** Pour Eternum Floor Polish on the floor directly from the container and using a FLAT MOP rub the polish into the floor using figure of eight motion.



**6** The polished floor will need at least 30 min to dry. It is important that you do not walk on wet floor as your footprints will dry into the polish and you won't be able to get rid of them.



**7** Wash your flat mop head with warm soapy water before it dries out.

**Tips: IMPORTANT:** Do not use on tiled or Altro floors. Ensure the floors are thoroughly clean and scrubbed before applying the polish.

**Always remember:** Allow sufficient time for the floors to dry - at least 30 min.

